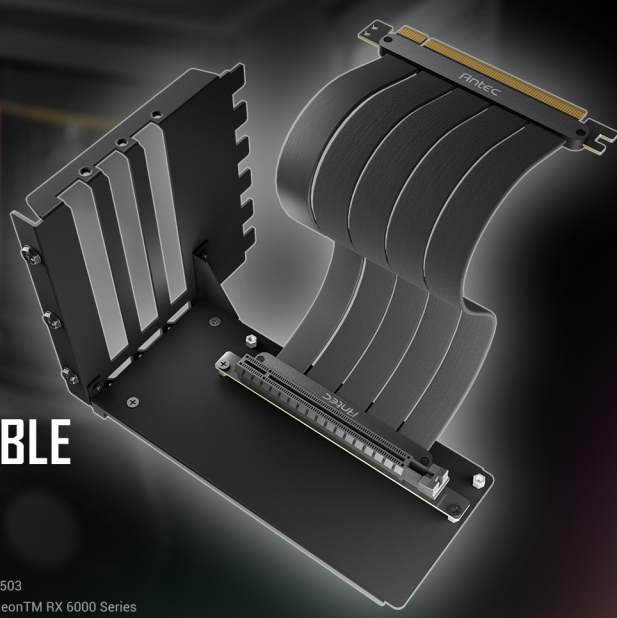


Antec

# ANTEC PCI-E 4.0 RISER CABLE WITH BRACKET

Showcase your GPU by using Antec Gen4 riser cable.


Compatible Antec Cases : Performance 1 / P20C / P20C White / P20C ARGB / DP505 / DP503  
Compatible Graphics Cards: NVIDIA Geforce RTX 4060 Ti/4060, RTX 30 Series & AMD Radeon™ RX 6000 Series

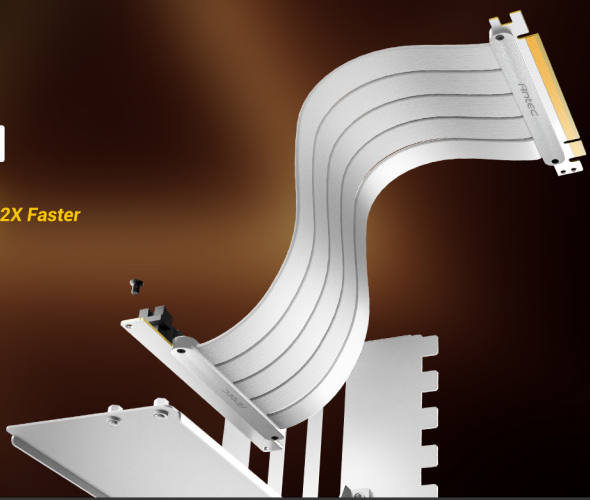


180° GRAPHIC CARD MOUNT

## SUPPORT PCIE 4.0

PCI-E 4.0  2X Faster

PCI-E 3.0 



### High quality golden plate and shielded PCB

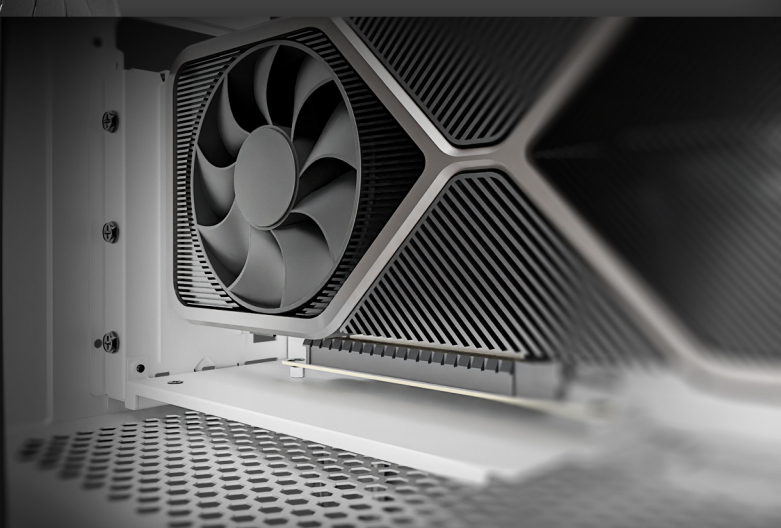
High shielding PCB and golden plate connector, stable and high performance, FPS lossless output, experience 2x speed from PCIE3.0.

### Ultra-Flexible Cable Sleeves

Sectional design cable, soft material, bendable, to meet a variety of installation needs.

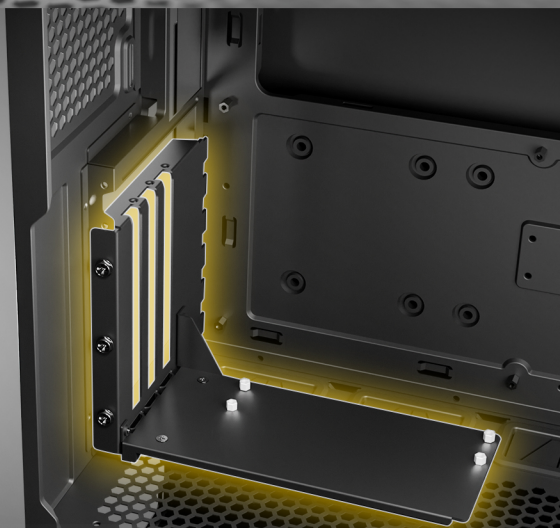
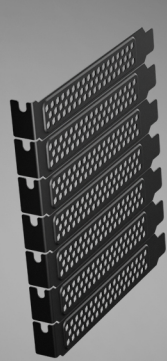
## COMPATIBLE WITH MOST GRAPHICS CARDS

NVIDIA GEFORCE RTX 4060 TI / 4060  
NVIDIA GEFORCE RTX 30 SERIES  
AMD RADEON™ RX 6000 SERIES

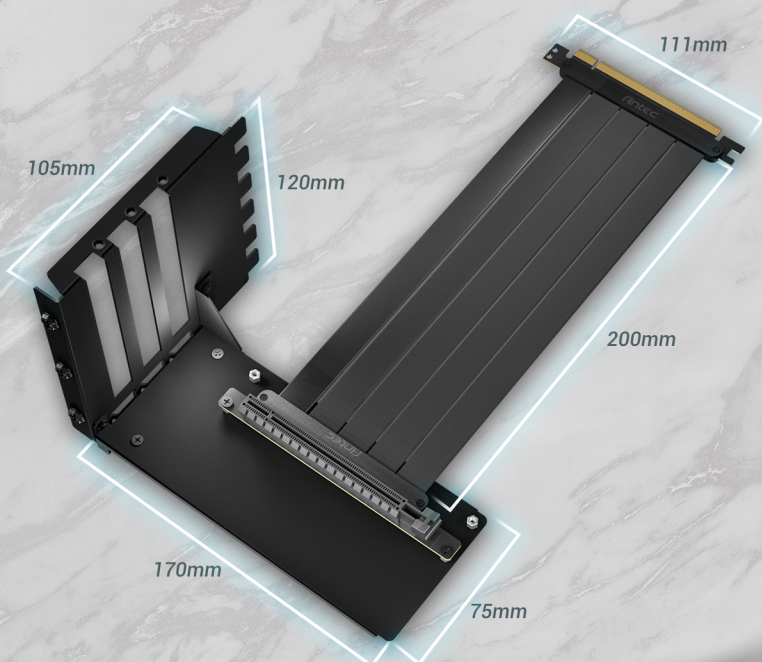


## ALUMINUM BRACKET

Only supports full-break PCIE expansion slot chassis.

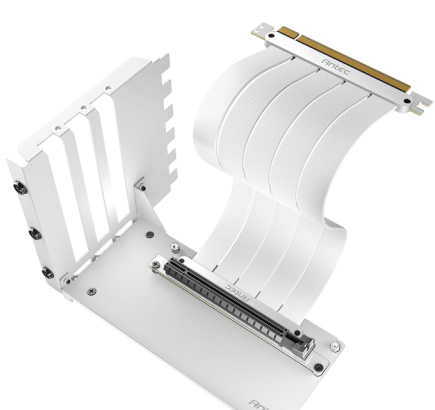
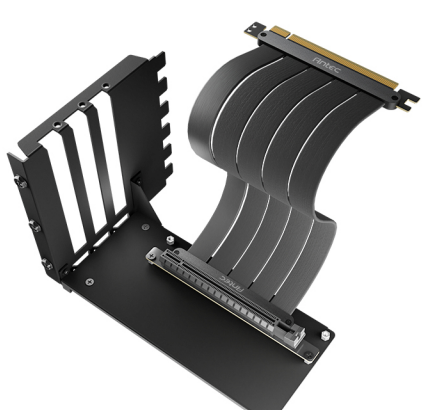


## DIMENSIONS



## PACKAGE CONTENTS

- PCIE 4.0 Riser Cable (200mm) X1
- VGA Vertical Bracket X1
- Screw Bag X1



Color	Black
Model Name	AT-RCVB-BK200-PCIE4
UPC#	0-761345-77707-0

Color	White
Model Name	AT-RCVB-W200-PCIE4
UPC#	0-761345-77714-8

Antec