

## RAPTOR

The most stable power, surge protection and power backup supplying to PCs, small servers, and workstations. Combining with the following characteristics, RAPTOR series are definitely the best choice for you.



### Main Feature

#### Build-in automated voltage regulator (AVR)

Raptor is equipped with AVR function, which has wide input voltage range of  $\pm 25\%$ .

#### Automated short circuit and overload protection

Provide automated short circuit and overload protection ensuring safety and load life expectancy.

#### Advanced green mode function

Implemented with green mode functionality for energy saving and customer convenience.

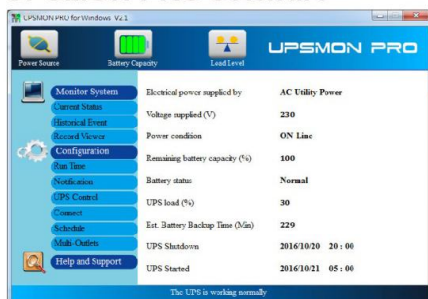
#### Build-in audible alarm and LED/LCD status indicator

Raptor status indicates via audible alarm warning and LED/LCD flash pattern.

#### UPSMON PRO software / APP, the user-friendly power management

Management of real-time graphical status indication, scheduled shut down, event and data logger, etc.

#### UPSMON PRO software



**SMART  
RELIABLE  
CONVENIENT**



# Line Interactive UPS

## Specification

Model	RPT-600A RPT-600AP	RPT-800A RPT-800AP	RPT-1000A RPT-1000AP	RPT-1025AP	RPT-1500AP	RPT-2000AP
<b>Configuration</b>						
Capacity (VA)	600 VA	800 VA	1000 VA	1025 VA	1500 VA	2000 VA
Capacity (Watts)	360 W	480 W	600 W	615 W	900 W	1200 W
Form	Tower Type					
<b>Input</b>						
Voltage	100 / 110 / 120 VAC or 220 / 230 / 240 VAC					
Input Voltage Range	75 - 150 or 165 - 300 VAC					
Input Frequency Range	50 Hz / 60 Hz (Auto Sensing)					
<b>Output</b>						
Waveform	Simulated Sine Wave					
Voltage	100 / 110 / 120 VAC or 220 / 230 / 240 VAC					
Frequency	50 Hz / 60 Hz $\pm$ 1 Hz					
Transfer Time	2 - 4 ms (Typical)					
<b>Protection</b>						
Full Protection	Overload, Surge, Short Circuit					
Tele Communication	RJ11 / RJ45 : AP model					
<b>Battery</b>						
Type	12V 7Ah	12V 7.2Ah	12V 9Ah	12V 7Ah	12V 7.2Ah	12V 9Ah
Quantity	1	1	1	2	2	2
Sealed, Maintenance Free	Yes					
Typical Recharge Time	3-4 hr to 90%					
<b>Management &amp; Communication</b>						
Indicator	LED Panel, LCD Panel (Option)					
Communication Port	USB B type : AP Model					
<b>Physical</b>						
Dimensions (WxDxH) (mm)	100 x 278 x 143			147 x 360 x 164		
Weight (kgs)	4.3	4.8	5.4	8.5	10.1	11.1
Shipping Dimensions (mm)	329 x 147 x 227			449 x 233 x 277		
Shipping Weight (kgs)	4.8	5.3	5.9	9.7	11.3	12.3
<b>Alarm</b>						
Overload / Fault	Continuous Beeping					
Battery Mode	Beep every 2 seconds					
Low Battery	Beep every 0.5 second					
<b>Environment</b>						
Operating Humidity	0-90 % RH at 0-40°C (Non-condensing)					
Audible Noise	Less than 40 dB					

\* Specifications are subject to change without further notice.

\* Specifications are for reference, actual information should be based on real product.